



Marisa Flores
Community Manager

operations@togethercenter.org

VISION

Together Center envisions healthy, housed, and thriving communities for all.



MISSION

Together Center's mission is to spark connections through people-focused spaces for nonprofits and the communities they strengthen.

STRATEGIES

Co-locate, convene, and connect an array of providers and affordable housing on one campus.

Provide Resource Navigation to reduce barriers and help people find the assistance they need, when they need it.

Provide long-term, stable, affordable spaces for nonprofits where their services are needed.

Operate using a long-term, smart, and sustainable business model that includes nonprofit land ownership.

Create intentional partnerships for transformative solutions for social problems.

Actively build a community of purpose and belonging.

VALUES

Radical compassion – empathy and support without judgement, honor the dignity of the whole person.

Joyful responsiveness – vigor in constant communication and meaningful, timely responses to community needs.

Ardent equity – facilitate access to community resources for all, particularly those who have been marginalized or historically disadvantaged.

Intentional inclusion – more voices are heard, valued, and engaged.

Active empowerment – sharing our power and energizing all to claim the power with confidence and accountability.

Creative collaboration – uniting unexpected partners to solve challenging problems.

TOGETHER CENTER CAMPUS

49,000 sq ft human services hub includes:

- Lobby with public phones, computer, and resource navigation
- Community kitchen
- Social purpose co-working space
- Conference center to host nonprofit events, trainings & multicultural gatherings
- Community art gallery
- Over 25 nonprofit agencies

Affordable housing above the 1st Floor

- Horizon Housing at Together Center – 30-50% AMI
- Polaris at Together Center – 60% AMI



TOGETHER CENTER PROVIDER PARTNERS

Together Center's Onsite Provider Partners

A full range of health and social supports under one roof.



4 Tomorrow

425-891-0346 | www.4tomorrow.today
Latino and Youth focused organization provides assistance, tools, and resources to help community members navigate systems, overcome barriers, and build self-sufficiency.



A Regional Coalition For Housing (ARCH)

425-861-3677 | www.archhousing.org
Dedicated to increasing the supply of affordable housing in East King County.



Brightspark

206-329-1011 | www.brightspark.org
Works for every family to find safe, quality, affordable childcare while providing referrals and training.



Cascadia College

425-352-8860 | www.cascadia.edu
Satellite classroom has a broad array of programming to serve the needs of the entire community, including workforce education, ESL classes, and more.



Chinese Information and Service Center

425-502-0883/206-816-4991 | www.cisc-seattle.org
Support immigrants and their families by providing linguistically and culturally appropriate information, referral, advocacy, social, and support services.



Disability Empowerment Center

866-545-7055 | www.disabilityempowerment.org
Provides free individualized services for people with disabilities to empower and improve their lives.



Essentials First

425-502-7768 | www.essentialsfirst.org
Works to prevent illness and improve mental health, strengthen community well-being, and more by providing affordable access to basic hygiene products.



Eastside for All

425-209-0707/425-247-1118 | www.eastsideforall.org
Provides voter education, resources for people experiencing hate crimes, discrimination, or bias, and opportunities to advocate locally for racial equity in housing, safety and more.



HealthPoint Dental & Medical Clinics

Dental: 425-883-8000 Medical: 425-882-1697
www.healthpointchc.org/health-centers/redmond
Provides sliding scale primary medical and dental services, as well as complementary and alternative services.



IKRON

425-242-1713 | www.seattle.ikron.org/home
Provides employment services and behavioral health services to people facing mental health, physical health, developmental, or substance related barriers.



Indian American Community Services

253-234-9889 | <https://iacswa.org>
Serves the Indian American community through programs, services, and advocacy for people of all ages and life stages.



Jewish Family Service (JFS)

206-461-3240 | www.jfsseattle.org
Multi-service agency with programs for people with developmental disabilities, older adults, caregivers, immigrants, domestic violence survivors, and low-income individuals.



Kinderling Redmond

425-747-4004 | www.kinderling.org
Provides developmental evaluations, special education, and therapies to children.



Lake WA School District Transition Academy

425-861-3452 | www.lwsd.org/schools/transition-academy
Community based program to prepare students with developmental disabilities for work and life in the community.



Muslim Community Resource Center (MCRC)

425-947-7146 | <https://mapsredmond.org/mcrc>
Provides support to anyone in need. Various services include homelessness, hunger, and refugee assistance.



NAMI - Eastside

425-885-6264 | www.nami-eastside.org
Provides education, support, and advocacy for individuals and families affected by mental illness.



Open Doors for Multicultural Families

253-216-4479 | www.multiculturalfamilies.org
Ensures diverse families who have members with disabilities have equal access to services.



SOUND

206-901-2000 | www.sound.health
Helps with a wide variety of life challenges including mental health, chemical dependency issues, domestic violence, and trauma processing.

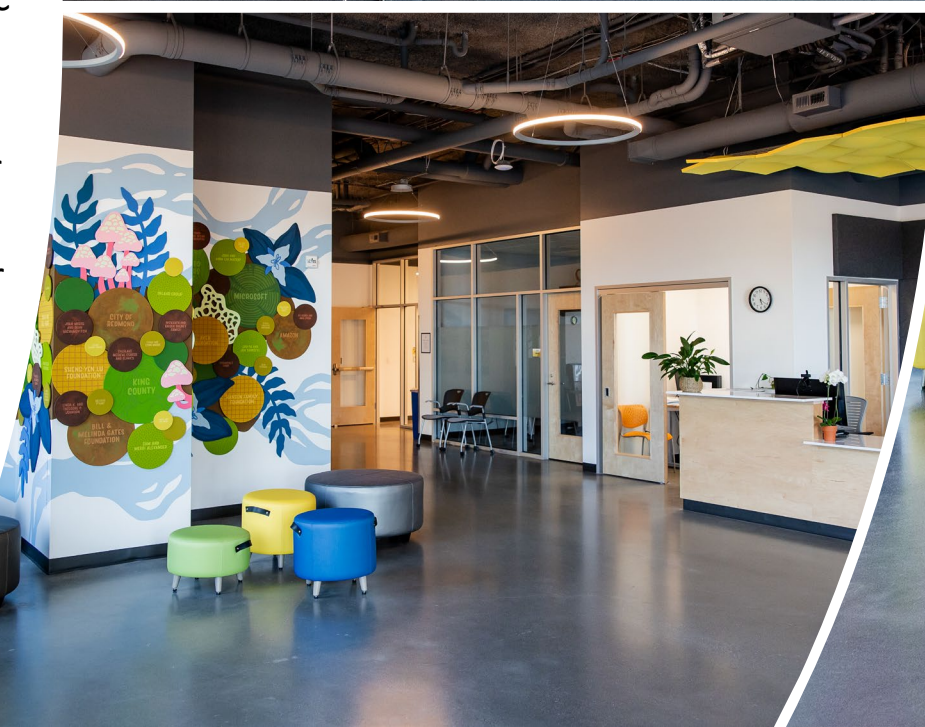
Advocate Office Partners

Rotating schedule of providers augments on-campus services.
<https://togethercenter.org/advocate-office-schedule>
City of Redmond Outreach Services | Consejo Counseling | Community Health Plan of Washington | Lake Washington Tech - Workforce Development | Sound Generations

425-869-6699 | info@togethercenter.org
www.togethercenter.org

Together Center Lobby

- Welcoming space for all
- ADA accessible
- Free computer, printer for public use
- Two telephones for public use
- Sitting area for those waiting for appointments
- Public ADA restrooms and water station
- TC Staff provide Resource Navigation



Together Community Spaces

- Kitchen – catering, celebrations, team meetings with food, coffee and tea all day, nonprofit staffers lunch
- Art Gallery – rotating art shows and show opening receptions in partnership with our onsite providers
- Coworking Studio
- Serendipity Lounge – casual meetings, conversations, meet ups



Together Conference Center

Available to be rented for fee by 501(c)3 nonprofit organizations or a fiscally sponsored organization of a 501(c)3 nonprofit.

- Over 450 meetings, events, celebrations, fundraisers, trainings held in 2024
- Collapsible, acoustic walls for maximum flexibility – 10-160 people

Find rental information and public events on the Events page on our website.





Events at Together Center



Together Center Events

Events listed on this calendar are free and open to the public. Advanced registration may be required, so please review the event for registration instructions. Attendance may be limited and entry into the event without registration is not guaranteed.

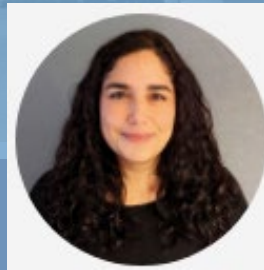
| 21 | 22 | 23 | 24 | 25 | 26 | 27 |
|--|---|----|---|---|---|---|
| Together Center Gallery: The Beauty of Islamic Art | | | | | | |
| | 2:00 pm - 4:00 pm Disability Empowerment Center @ Together Center - Eastside Peer Group for People with Disabilities | | 6:30 pm - 8:00 pm NorthWest Share Free Weekly Food Truck 6:30 pm - 8:00 pm NAMI Eastside In Person Peer Support Group | 6:00 pm - 9:00 pm NAMI Eastside en Espanol Latina Moms Support Group | 10:00 am - 4:30 pm NAMI Eastside Mental Health First Aid | 10:00 am - 4:30 pm NAMI Eastside Mental Health First Aid |
| 28 | 29 | 30 | 1 | 2 | 3 | 4 |
| Together Center Gallery: The Beauty of Islamic Art | | | | | | |
| | | | 4:00 pm - 6:00 pm Youth Community Art Making 4:00 pm - 6:00 pm Hopelink Mobility Drop In 6:30 pm - 8:00 pm NorthWest Share Free Weekly Food Truck 6:30 pm - 8:00 pm NAMI Eastside In Person Peer Support Group | | 10:00 am - 4:30 pm NAMI Eastside Mental Health First Aid | 2:00 pm - 4:00 pm Pride Across the Bridge Queer Figure Drawing |



Lobby Hours
Monday 9am-5pm
Tuesday 9am-5pm
Wednesday 9am-5pm
Thursday 9am-7pm
Friday 9am-5pm
Saturday & Sunday - Closed



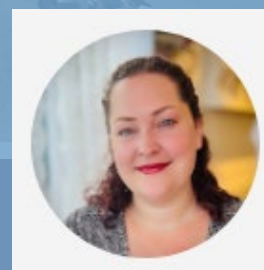
Kim Sarnecki
Chief Executive Officer
ceo@togethercenter.org



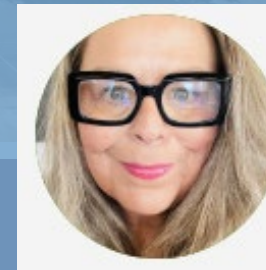
Marisa Flores
Community Manager
operations@togethercenter.org



Jared Stewart
External Engagement Manager
engagement@togethercenter.org



Skylar Hansen
Operations & Events Coordinator
skylar@togethercenter.org



Lisa Lustgarten Payne
Resource Navigation Coordinator
lisa@togethercenter.org