



# Carina.org

*An easy-to-use website where individuals seeking home care can match with care professionals.*

CLC Network Meeting  
Wednesday February 15th 2023

# Agenda

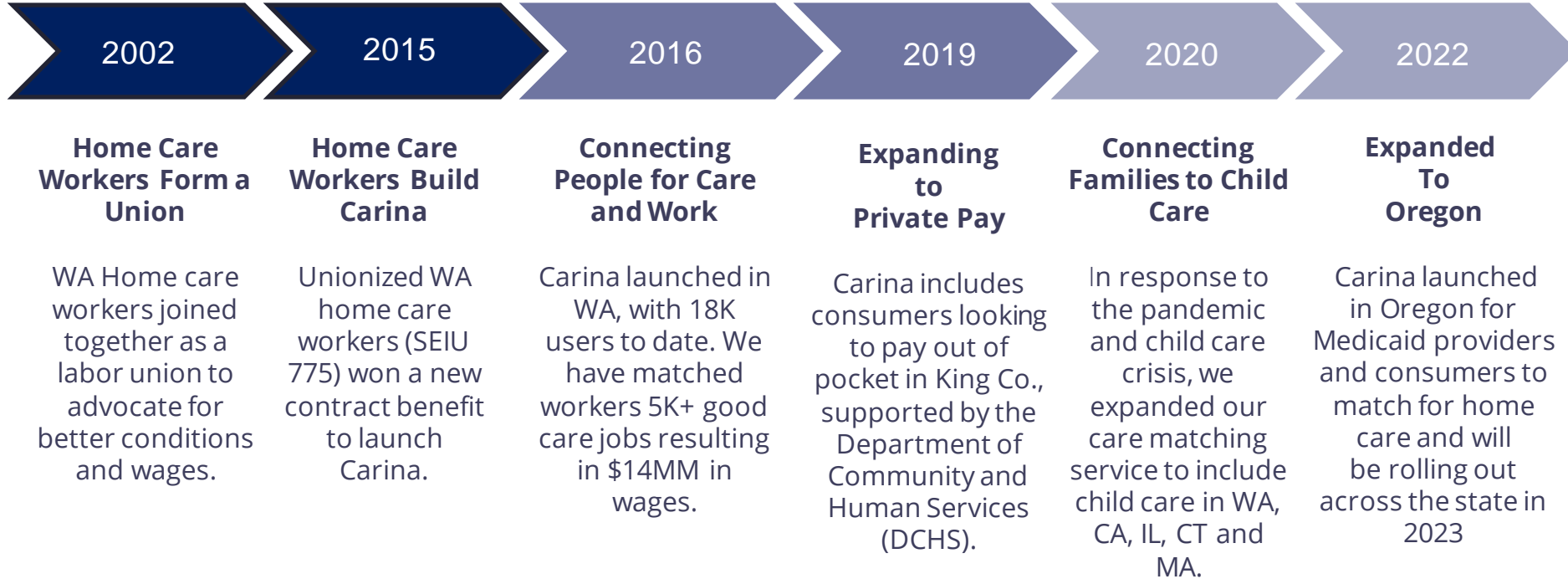
- About Carina
- Carina's home care matching Services
- Resources For Individual Providers
- Q & A



# About Carina



# Carina's Story



# Carina's Free Matching Service

We are a nonprofit that believes communities are stronger when all people, regardless of income, can easily and safely access quality care. We connect home care seekers with potential in-home caregivers so they can safely receive routine, ongoing care in their home, enhancing their ability to age in place.



**Find Home Care**



**Find Child Care**



**Find Good Care Jobs**

# Carina's Home Care Offerings:

## Medicaid and Out-of-Pocket/Subsidies

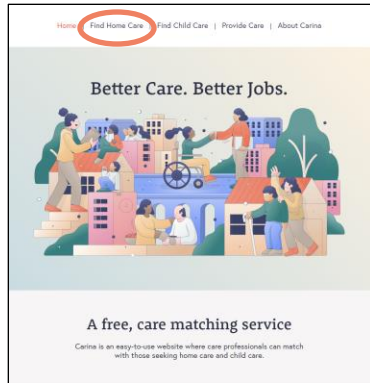
**Medicaid:** If you are enrolled in Medicaid and have authorized home care hours:

- Choose your care provider while working with your case manager
- Get direct access to a vetted pool of active, skilled, state-certified caregivers located in every county across WA
- Browse care providers and choose the one that is the best fit

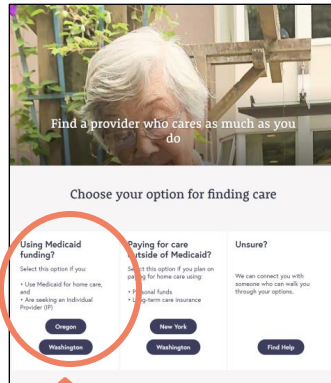
**Out of Pocket + Subsidies:** If you live in **King County** and are planning to pay out of pocket, with private insurance or another non-Medicaid program, or are unsure of your funding:

- Search for home care agencies with available providers near you
- Carina's partner home care agencies reach out to you to discuss your care needs and match you with a caregiver

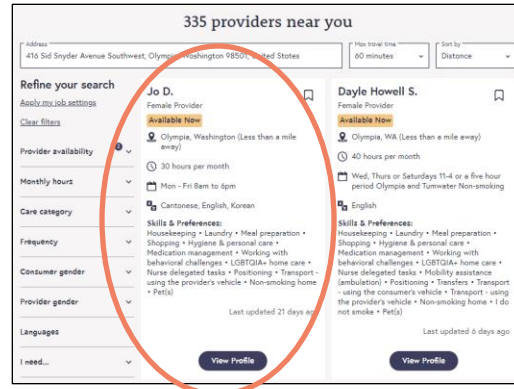
# Find Home Care IPs on **carina.org**



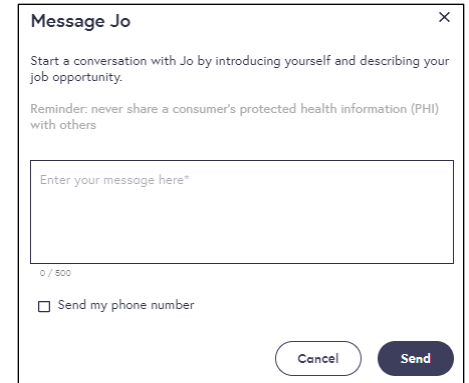
Start looking for care



Choose Your Option



Find Providers



Message and connect

# Find Home Care APs on **carina.org**

Find a provider who cares as much as you do

Choose your option for finding care

**Using Medicaid funding?**  
Select this option if you:  
• Use Medicaid for home care, and  
• Are seeking an Individual Provider (IP)

**Paying for care outside of Medicaid?**  
Select this option if you plan on paying for home care using:  
• Personal funds  
• Long-term care insurance

**Unsure?**  
We can connect you with someone who can walk you through your options.

Buttons: Oregon, Washington, New York, Washington, Find Help

Select Paying for Care Outside of Medicaid WA

Good news! Carina has 3 home care agencies with availability near you!

What is a home care agency?

First Choice In-Home Care  
Near ZIP code 98108  
Providers available: 4  
\$40 per hour  
Male and female providers  
English  
Services & Skills: Cleaning • Transportation • Meals • Personal care • Laundry • Shopping • Medication management  
Contact through Carina

Korean Women's Association [KWA]  
Near ZIP code 98108  
Providers available: 1  
\$20 per hour  
Only Female Provider  
English  
Services & Skills: Cleaning • Transportation • Meals • Personal care • Laundry • Shopping • Medication management  
Contact through Carina

Catholic Community Services [CCS]  
Near ZIP code 98108  
Providers available: 1  
\$20 per hour  
Only Female Provider  
English  
Services & Skills: Cleaning • Transportation • Meals • Personal care • Laundry • Shopping • Medication management  
Contact through Carina

Enter zip code

Send a message to First Choice In-Home Care

Who is the care for?  
 Someone else  Yourself

Care recipient's zip code: 98108  
Care recipient's age: [input]

Care recipient's needs  
Tell us more about the person who needs the care. This will help the agency better prepare for the call with you. For example, you can share their native language and describe health conditions, such as dementia, diabetes or disabilities.

0 / 500

How can the agency reach you?  
First name: [input] Last name: [input]  
Mobile phone: [input] Email: [input]

General availability for a callback  
Provide a couple of days/times during business hours that you are available for a call.  
0 / 100

I agree to Carina's Terms of Service and give permission to contact me. (We will send you occasional tips on finding home care. We are a nonprofit and will not sell your info or spam you.)

Cancel Send

Message

Success!

Carina has successfully sent your information to First Choice In-Home Care.

Here's what comes next...

First Choice In-Home Care will call or email you within a few business days. Please be ready to answer your phone or respond to their email when they reach out.

Want more options?  
We encourage you to contact more than one agency to find the care that's right for you.

View other agencies

Still have questions?  
Visit our FAQ to learn more about how to find and choose home care that meets your needs.

View FAQ

Connect



# Resources For IP's



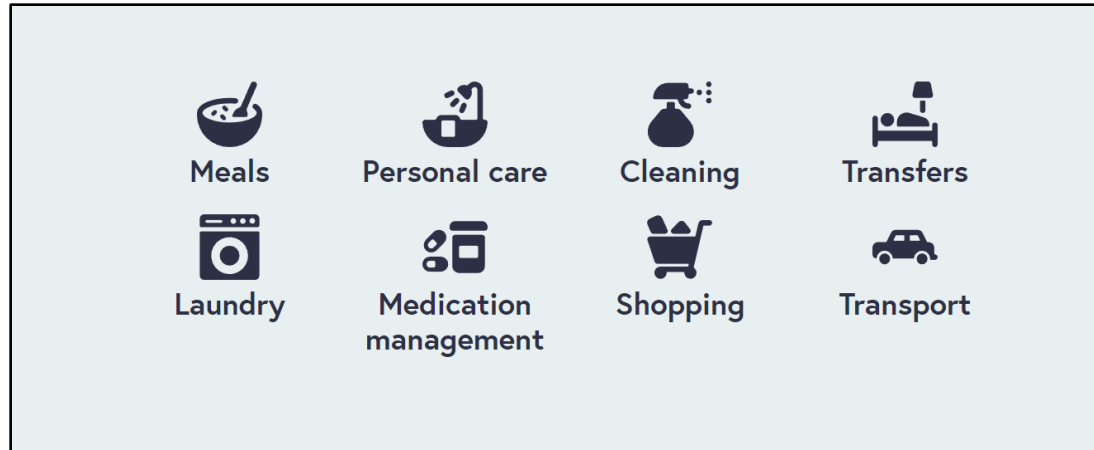
# Become an IP

If you are a family member, neighbor or volunteer and want to do paid work with Medicaid consumers, contact Consumer Direct Network Washington (CDWA) to become an Individual Provider and use Carina to match with someone who needs care near you.



# Home Care Services Provided By Caregivers On Carina

Providers on Carina help people with daily living activities so they can live at home independently.



# Consumer Direct Care Network WA



In June 2022, CDWA became the employer of all IPs in Washington who care for clients receiving services from DSHS. As the legal employer, the CDE is assuming all IP employer related responsibilities that were formerly managed by DSHS and AAAs.

## IP Requirements:

- 18 years or older
- Pass background checks.
- Do not require sponsorship.
- Authorized to work in the U.S.
- Complete training requirements.
- Valid driver's license and auto insurance, if authorized to provide transportation.

**For more information visit:** <https://www.consumerdirectwa.com/ip-resources/>

# Benefits for IPs

SEIU 775 Benefits Group provides Training, Health and Retirement Benefits for Caregivers



## Training

- The Training Partnership creates dynamic, high-quality training designed for caregivers, based on research and data and localized in many languages.
- SEIU 775 Benefits Group is Washington's second-largest educational institution and has provided 7.5 million hours of home care training since 2010.



## Health

- The Health Benefits Trust delivers high-quality, low-cost health coverage for just \$25/month that includes medical, dental, vision, prescription drug and behavioral health coverage for eligible caregivers.
- Eligible caregivers can also access free emotional health benefits, self-care services, life resources and free slip-resistant shoes called Caregiver Kicks.



## Retirement

- The Secure Retirement Plan is the first of its kind in the nation for caregivers, providing additional financial security when they retire.
- Contributions are based on hours worked, not payroll deductions. Funding is through employer contribution only.
- Caregivers who participate in this Plan can opt to contribute to an IRA or 401k/403b.

# Basic Training 70

Basic Training 70 prepares you with the information and skills you need to successfully pass the certification exam and become a Home Care Aide (HCA). 70 hours is required training for Standard Home Care Aides (HCAs) who take care of clients both part- or full-time.

## Training:

- Takes place over a total of 14 days.
- Is a combination of in-person and webinar classes that run 3.5 to 7 hours each day.
- Is paid; get paid for the time you spend in class.



## Basic Training 70 Sample Course Schedule

CLASS DAY*	MODULE	LOCATION	LENGTH
1	1	In-person Classroom	3.5 hours
2	2	Zoom Webinar	3.5 hours
3	3	Zoom Webinar	3.5 hours
4	4	Zoom Webinar	3.5 hours
5	5	Zoom Webinar	3.5 hours
6	6	In-person Classroom	3.5 hours
7	19	Zoom Webinar	3.5 hours
8	20	Zoom Webinar	3.5 hours
9	7-8	In-person Classroom	7 hours
10	9-10	In-person Classroom	7 hours
11	11-12	In-person Classroom	7 hours
12	13-14	In-person Classroom	7 hours
13	15-16	In-person Classroom	7 hours
14	17-18	In-person Classroom	7 hours

Basic Training 70 prepares you with the skills and information you need to successfully pass your Home Care Aide (HCA) certification exam. You will be taking classes both in-person and online. It is important that you attend the online classes just like you would with a regular Basic Training class. You will receive your learner material book during Module 1. It is very important that you do not miss this class.

### Basic Training Overview

- Basic Training is a total of 14 days.
- The 3.5-hour class days will have a 15-minute break.
- The 7-hour class days will have a lunch break and a 15-minute break for each module.

### How to Attend Your Online Webinars

You will be using Zoom, a live video platform, to take your online class. Zoom can be used on your computer, touchscreen phone or tablet.

Please download the application with enough time before your first scheduled class. If you need help, visit [mysiu.be/zoom](https://mysiu.be/zoom).

\*This is the most common classroom schedule, but some modules may be on different days. You will receive an email with your schedule after you enroll.

# Q&A

# Find Us Online at [carina.org](https://carina.org)

 [www.facebook.com/CarinaCareMatch](https://www.facebook.com/CarinaCareMatch)

 [tinyurl.com/bd7w72v9](https://tinyurl.com/bd7w72v9)

 [www.instagram.com/carinacarematch/](https://www.instagram.com/carinacarematch/)





Thank you for connecting with Carina.  
Please do not share this presentation outside of your  
organization without Carina's permission.